



Commonwealth Electoral Act 1918
PROPOSED BOUNDARIES AND NAMES OF COMMONWEALTH ELECTORAL DIVISIONS IN NEW SOUTH WALES

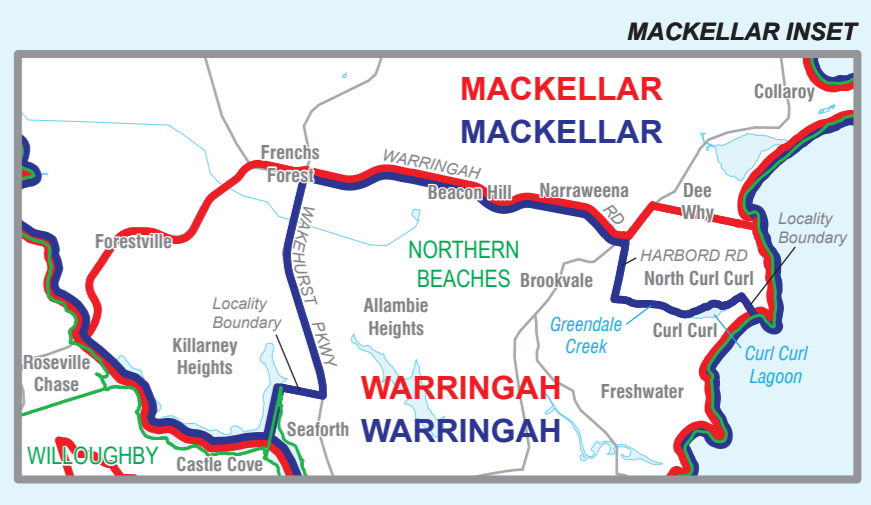
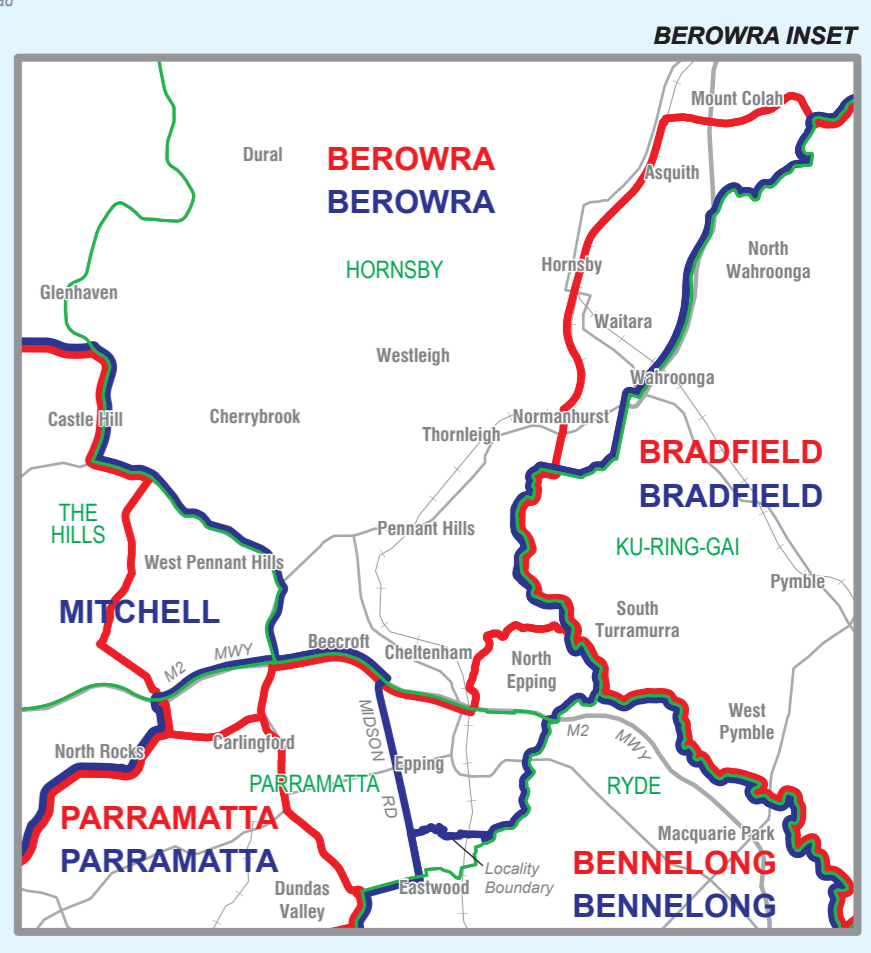
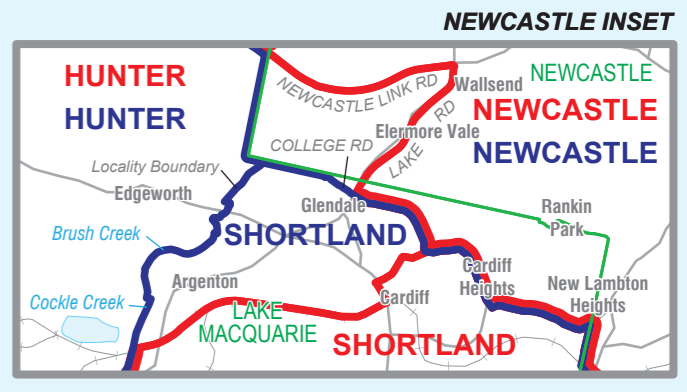
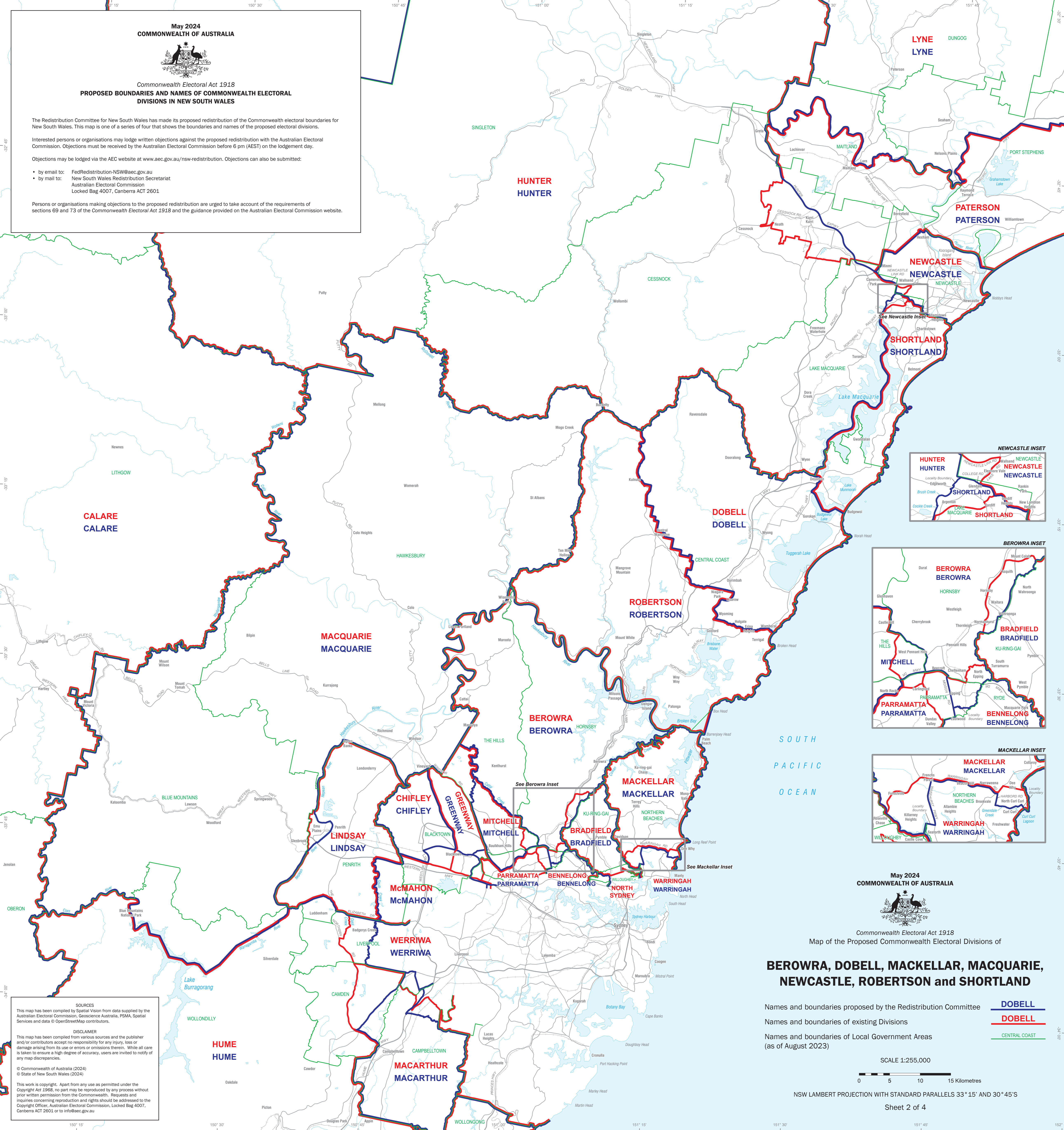
The Redistribution Committee for New South Wales has made its proposed redistribution of the Commonwealth electoral boundaries for New South Wales. This map is one of a series of four that shows the boundaries and names of the proposed electoral divisions.

Interested persons or organisations may lodge written objections against the proposed redistribution with the Australian Electoral Commission. Objections must be received by the Australian Electoral Commission before 6 pm (AEST) on the lodgement day.

Objections may be lodged via the AEC website at www.aec.gov.au/nsw-redistribution. Objections can also be submitted:

- by email to: FedRedistribution-NSW@aec.gov.au
- by mail to: New South Wales Redistribution Secretariat, Australian Electoral Commission, Locked Bag 4007, Canberra ACT 2601.

Persons or organisations making objections to the proposed redistribution are urged to take account of the requirements of sections 69 and 73 of the Commonwealth Electoral Act 1918 and the guidance provided on the Australian Electoral Commission website.



Commonwealth Electoral Act 1918
Map of the Proposed Commonwealth Electoral Divisions of

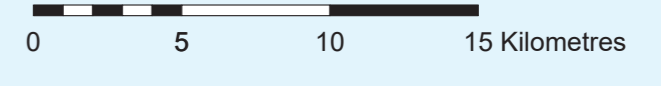
BEROWRA, DOBELL, MACKELLAR, MACQUARIE, NEWCASTLE, ROBERTSON and SHORTLAND

Names and boundaries proposed by the Redistribution Committee **DOBELL**

Names and boundaries of existing Divisions **DOBELL**

Names and boundaries of Local Government Areas (as of August 2023) **CENTRAL COAST**

SCALE 1:255,000



NSW LAMBERT PROJECTION WITH STANDARD PARALLELS 33° 15' AND 30° 45' S

SOURCES
This map has been compiled by Spatial Vision from data supplied by the Australian Electoral Commission, Geoscience Australia, PSMA, Spatial Services and data © OpenStreetMap contributors.

DISCLAIMER
This map has been compiled from various sources and the publisher and/or contributors accept no responsibility for any injury, loss or damage arising from its use or errors or omissions therein. While all care is taken to ensure a high degree of accuracy, users are invited to notify of any map discrepancies.

© Commonwealth of Australia (2024)
© State of New South Wales (2024)

This work is copyright. Apart from any use as permitted under the Copyright Act 1968, no part may be reproduced by any process without prior written permission from the Commonwealth. Requests and inquiries concerning reproduction and rights should be addressed to the Copyright Officer, Australian Electoral Commission, Locked Bag 4007, Canberra ACT 2601 or to info@aec.gov.au